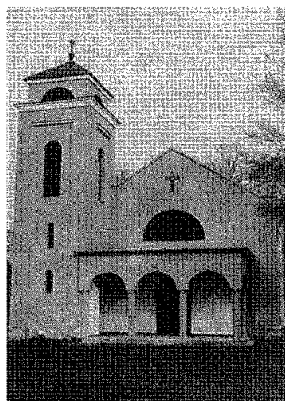


Aba
1948—50
Dunamellék, Vértesalja

Aba

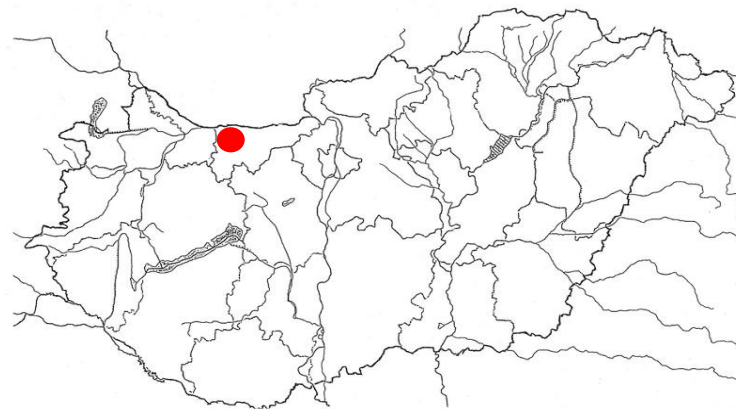
1948-50



Bábolna
1934
Dunántúl, Komárom

Bábolna

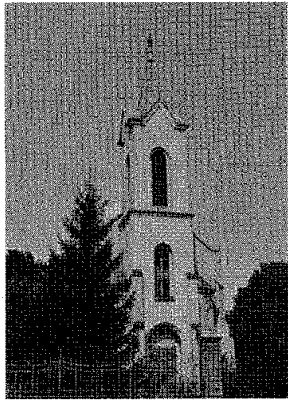
1934





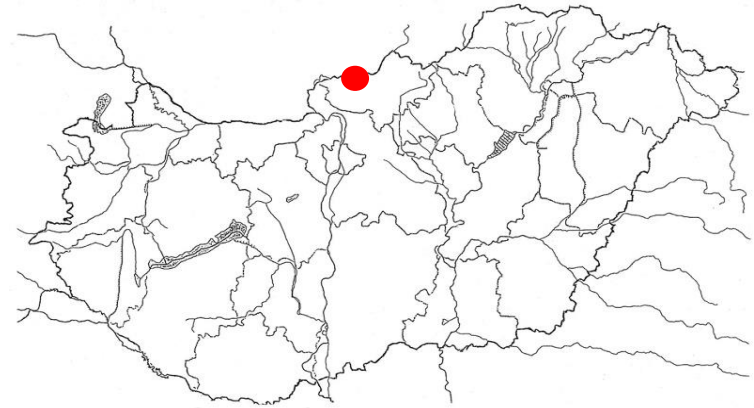
Bácsalmás
1939
Dunamellék, Bács-Kiskunság

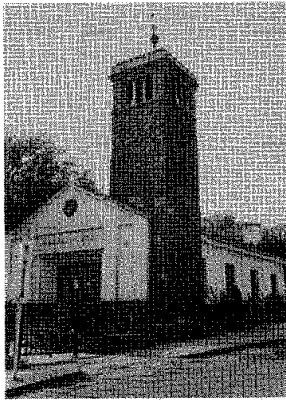
Bácsalmás 1939



Balassagyarmat
1904
Dunamellék, Északpest

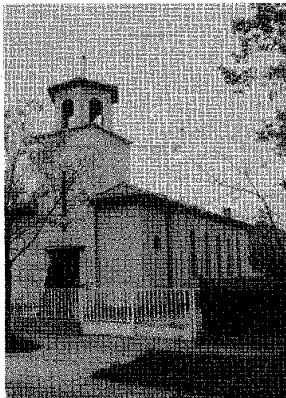
Balassagyarmat 1904





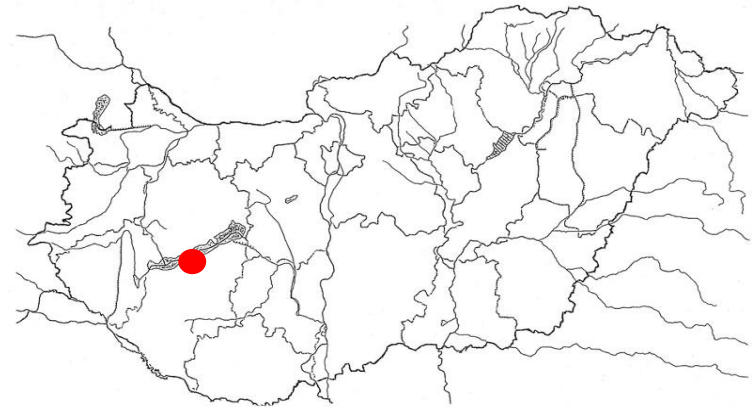
Balatonalmádi
1954—58
Dunántúl, Veszprém

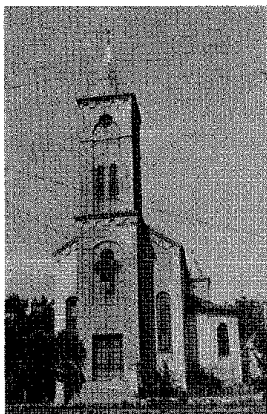
Balatonalmádi 1954-58



Balatonboglár
1937
Dunántúl, Somogy

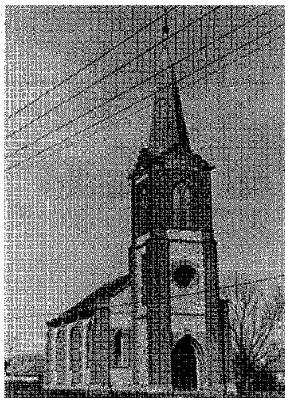
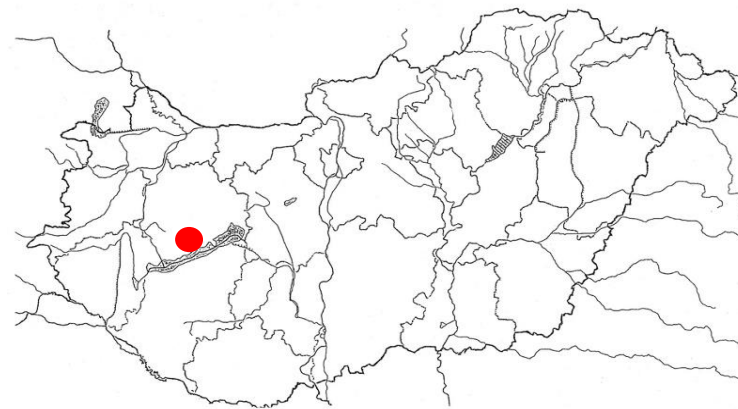
Balatonboglár 1937





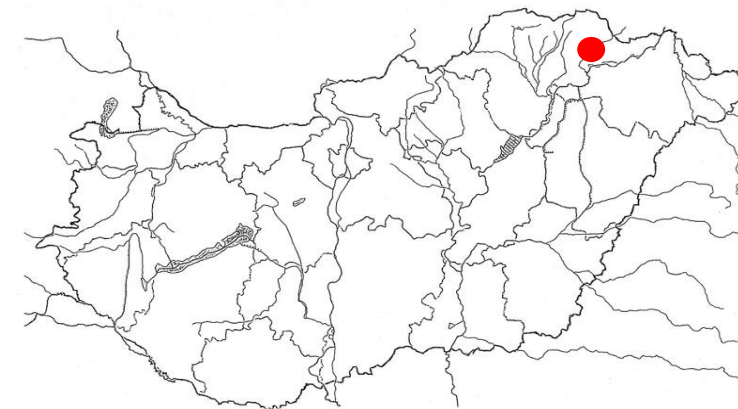
Balatonhenye
1912
Dunántúl, Veszprém

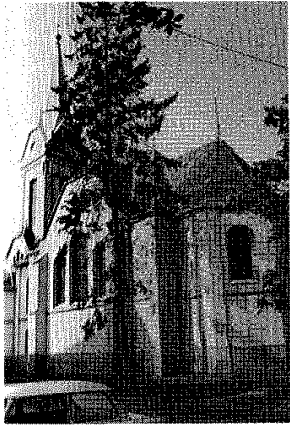
Balatonhenye 1912



Balsa
1950
Tiszántúl, Nyírség

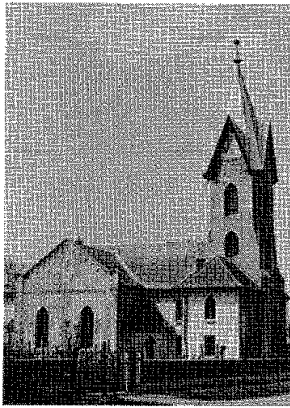
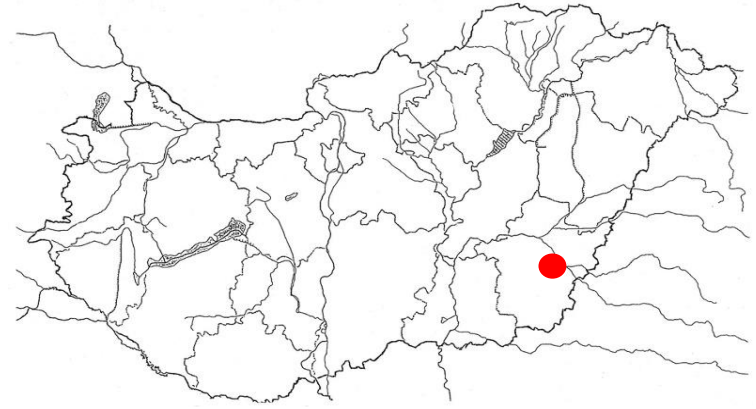
Balsa 1950





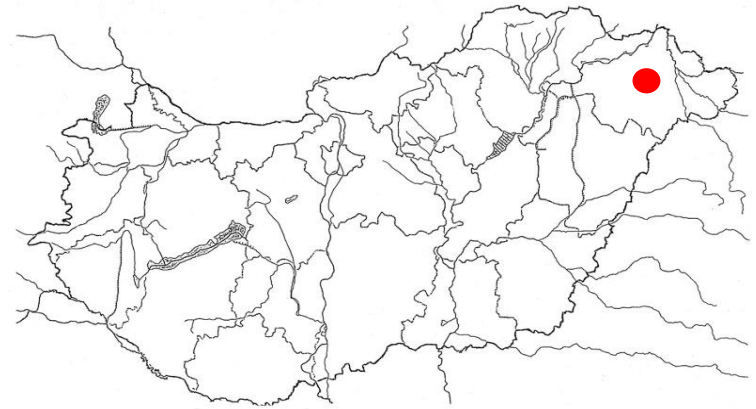
Békéscsaba
1912
Tiszántúl, Békés

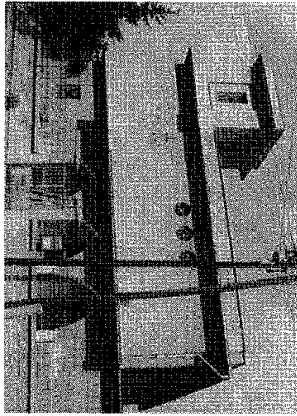
Békéscsaba 1912



Besenyőd
1928
Tiszántúl, Nyírség

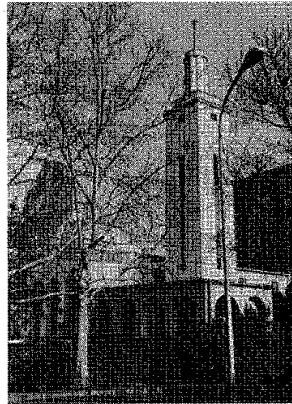
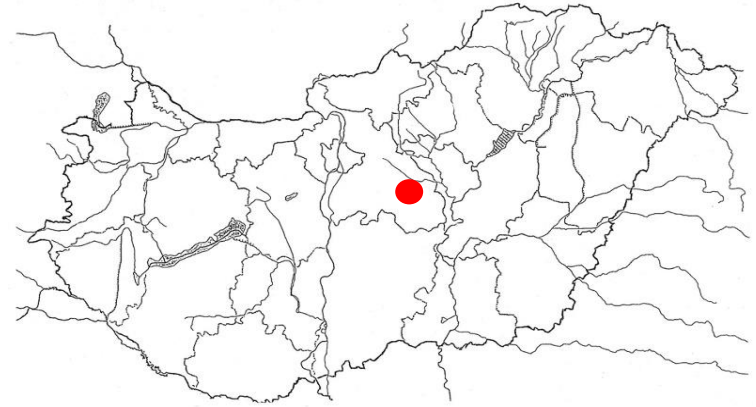
Besenyőd 1928





Cegléd Felszeg
1947, torony 1985
Dunamellék, Délpest

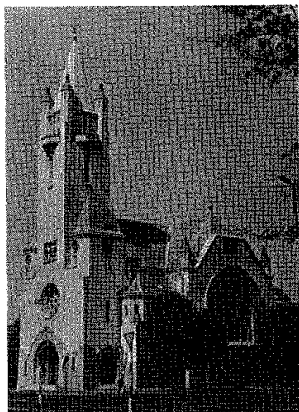
Cegléd Felszeg 1947 és 1985



Csongrád
1938
Tiszántúl, Csongrád

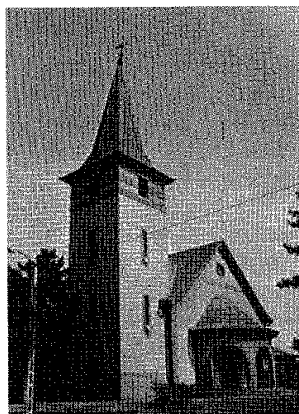
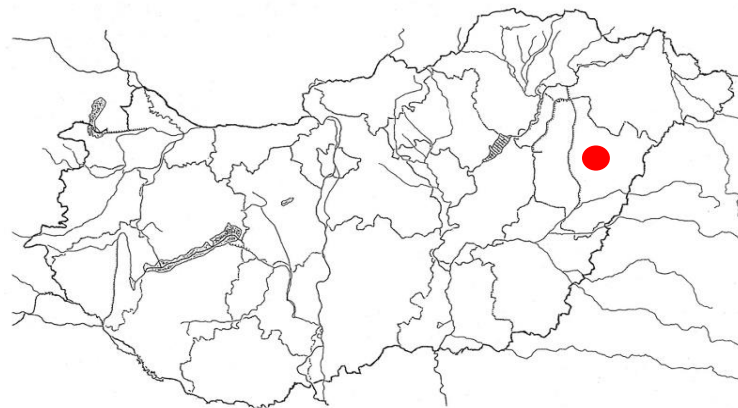
Csongrád 1938





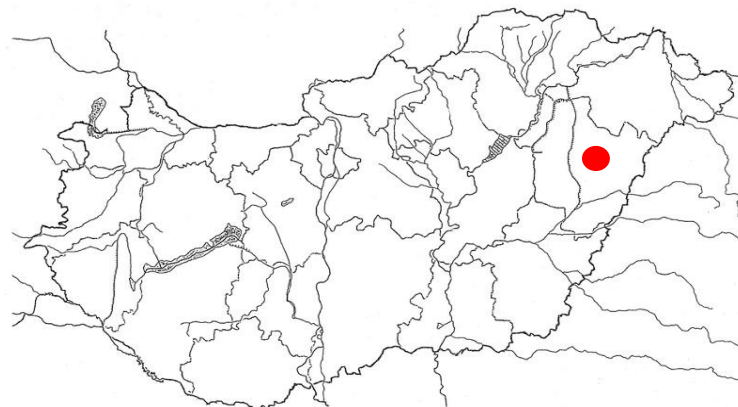
Debrecen Árpád tér
1912
Tiszántúl, Debrecen

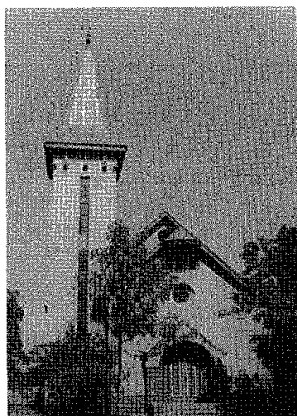
Debrecen Árpád tér 1912



Debrecen Csapókert
1937
Tiszántúl, Debrecen

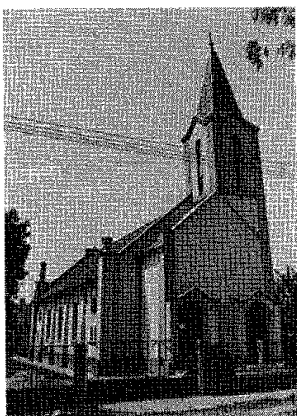
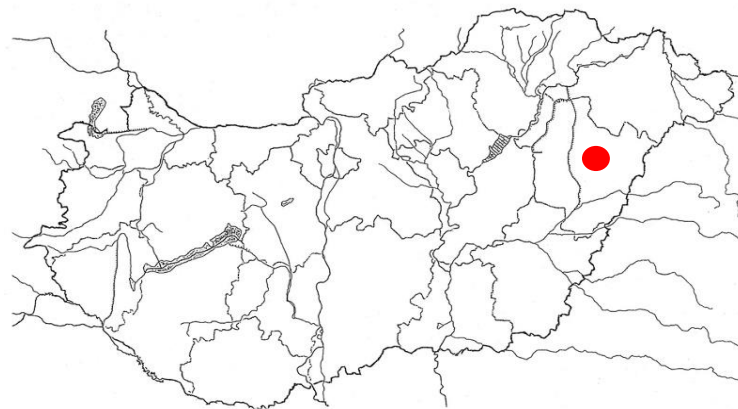
Debrecen Csapó kert 1937





Debrecen Homokkert
1935
Tiszántúl, Debrecen

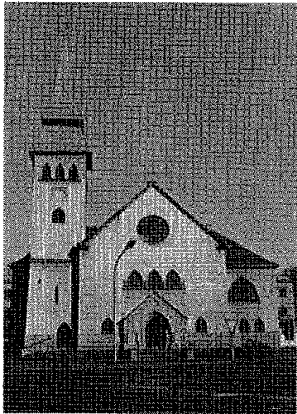
Debrecen Homokkert 1935



Debrecen Kerekestelep
1935
Tiszántúl, Debrecen

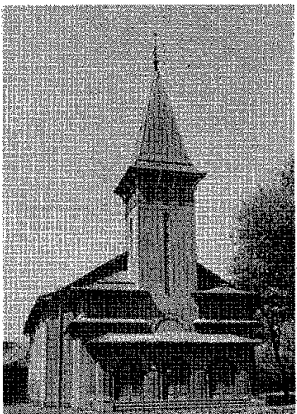
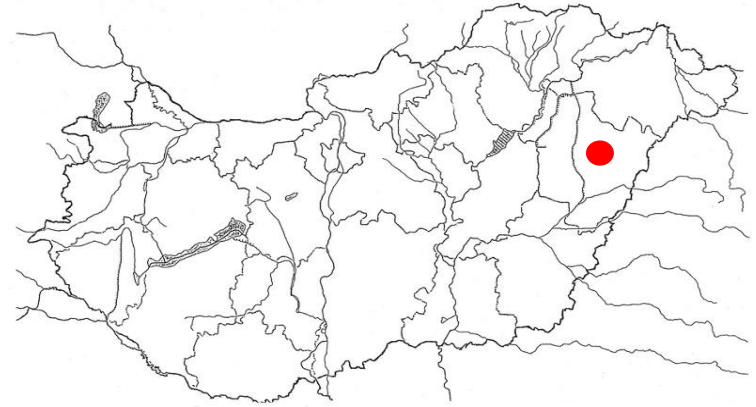
Debrecen Kerekestelep 1935





Debrecen Mester u.
1938
Tiszántúl, Debrecen

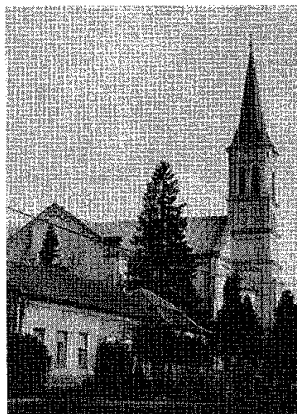
Debrecen Mester utca 1938



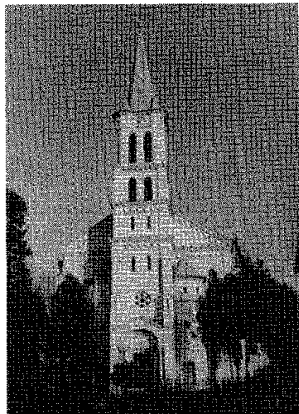
Debrecen Szabadság telep
1936
Tiszántúl, Debrecen

Debrecen
Szabadságtelep 1936





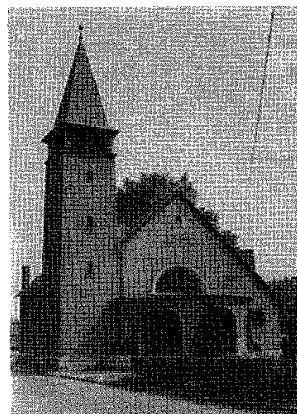
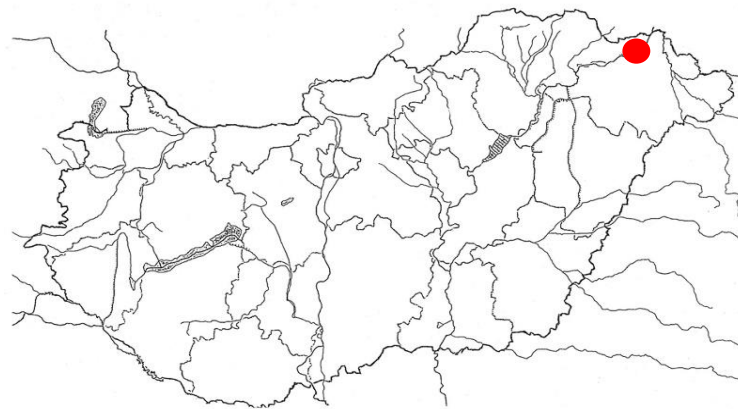
Dombrád (a)
1910—12
Tiszántúl, Felsőszabolcs



Dombrád (b)

Dombrád

1910-1912

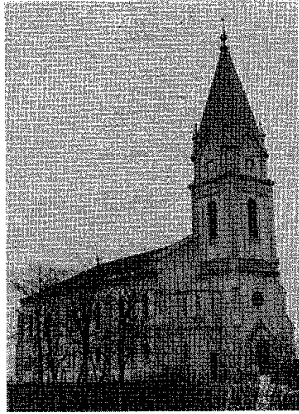


Dorog
1935—36
Dunántúl, Komárom

Dorog

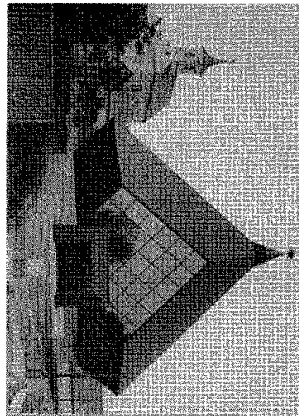
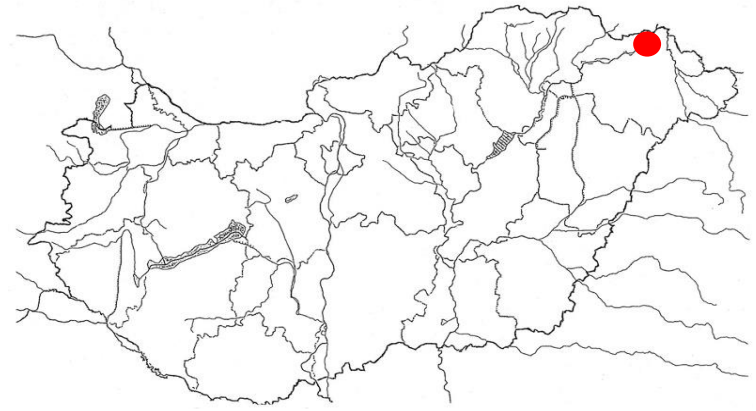
1935-36





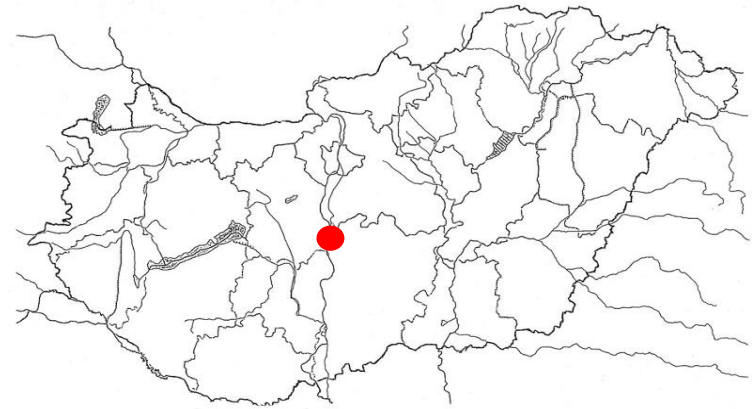
Döge
1905–07
Tiszántúl, Felsőszabolc

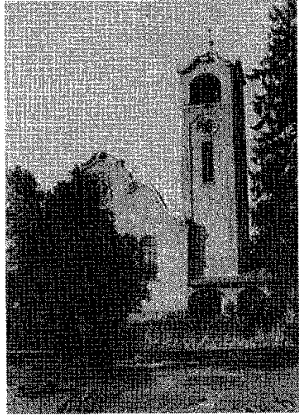
Döge 1905-1907



Dunaújváros (a)
1982–85
Dunamellék, Vértesalja

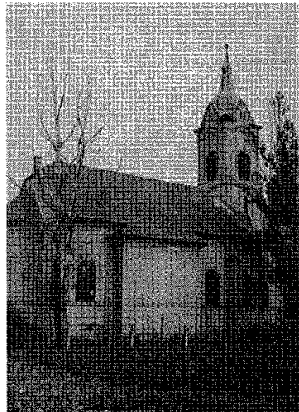
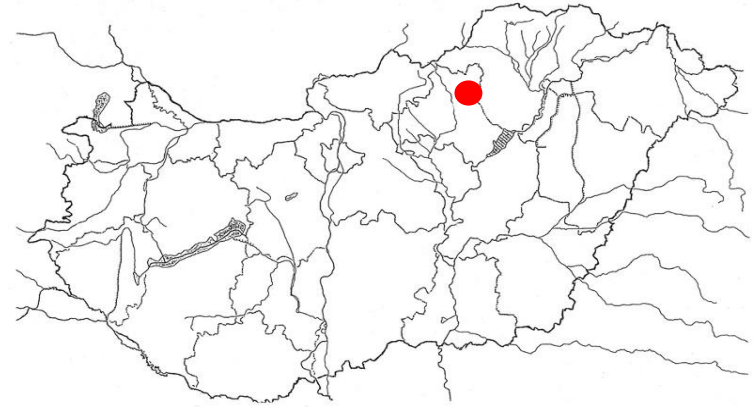
Dunaújváros 1982-85





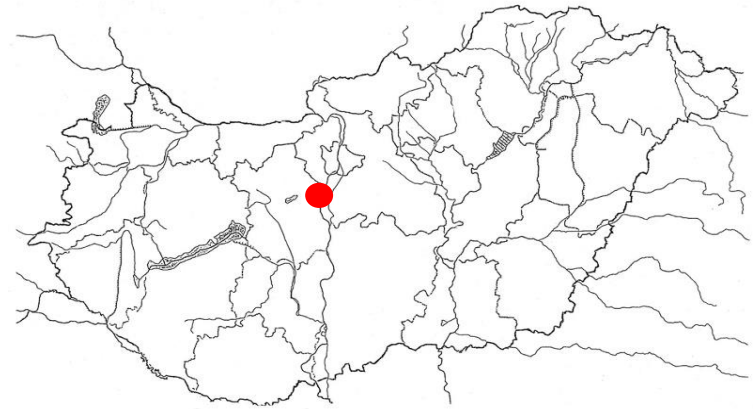
Eger
1930
Tiszáninnen, Egervölgy

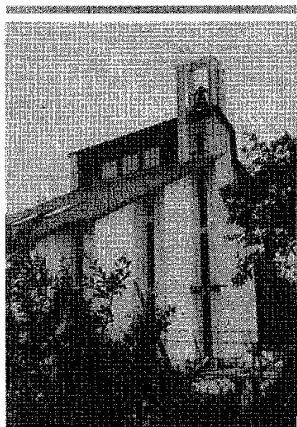
Eger 1930



Ercsi
1929-30
Dunamellék, Vértesalja

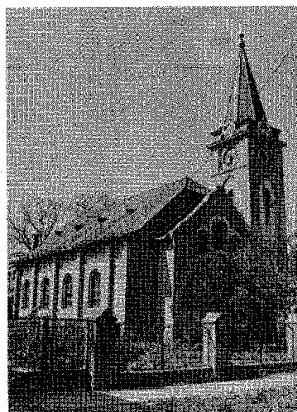
Ercsi 1929-30





Erdparkváros
1986—87
Dunamellék, Északpest

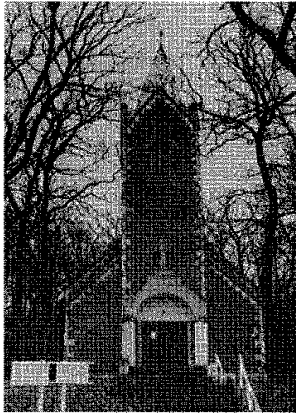
Erdparkváros 1986-87



Fegyvernek
1928
Tiszántúl, Nagykunság

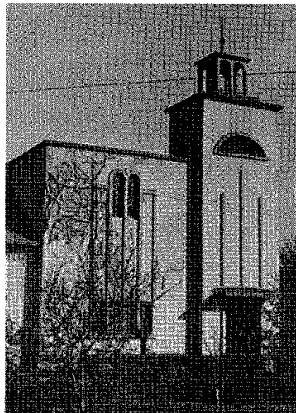
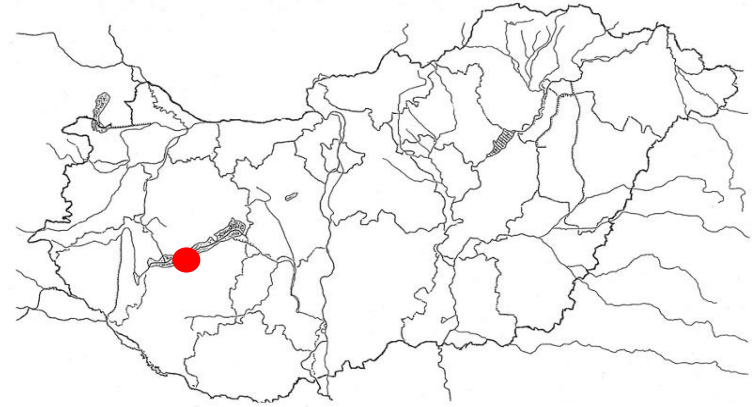
Fegyvernek 1928





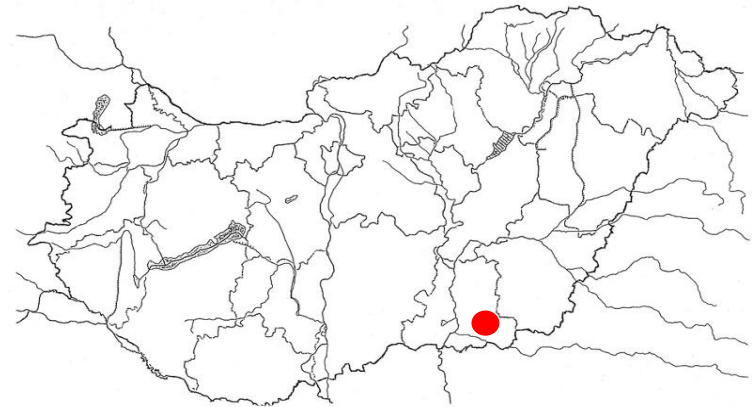
Fonyód
1936
Dunántúl, Somogy

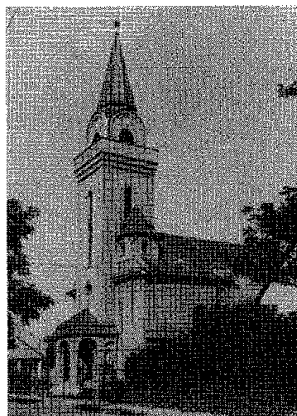
Fonyód 1936



Földeák
1937-38
Tiszántúl, Csongrád

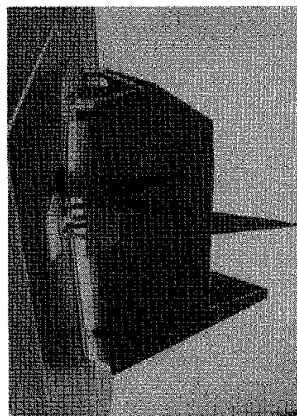
Földeák 1937-38





Göd (Felsőgöd)
1938—39
Dunamellék, Északpest

Göd (Felsőgöd) 1938-39



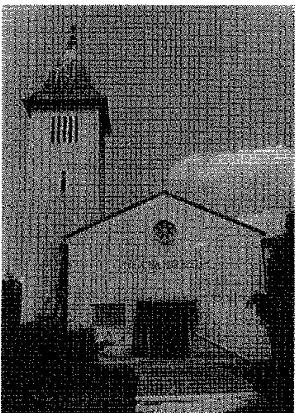
Gyál (a)
épül 1986—87-ben (makett)
Dunamellék, Délpest

Gyál 1986-87





Gyórság
1963—68
Dunántúl, Győr-Sopron-Pápa



Isaszeg
1948—49
Dunamellék, Északpest

Gyórság

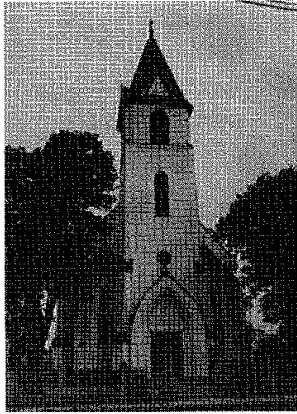
1963-68



Isaszeg

1948-49

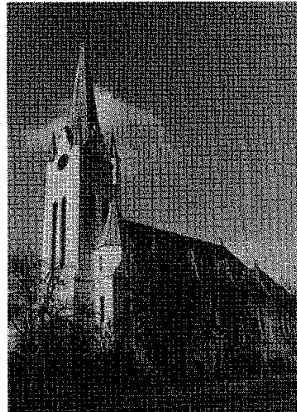
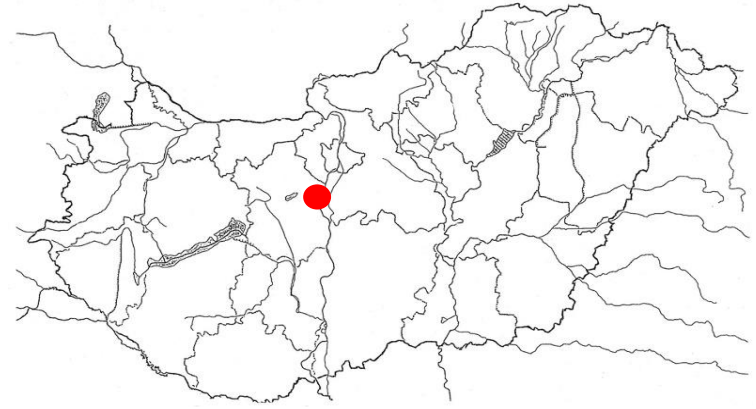




Iváncsa
1914
Dunamellék, Vértesszajka

Iváncsa

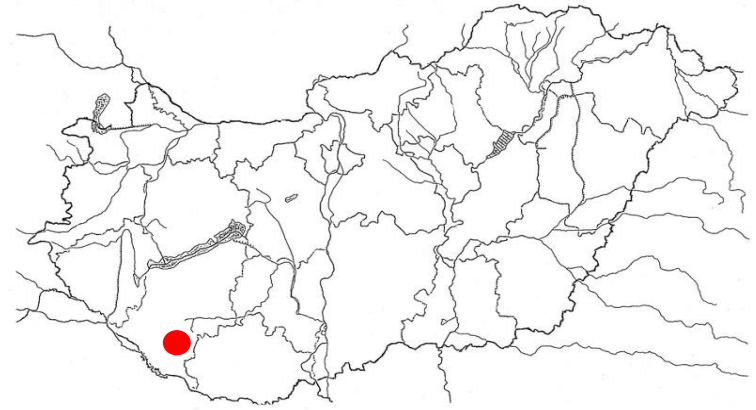
1914

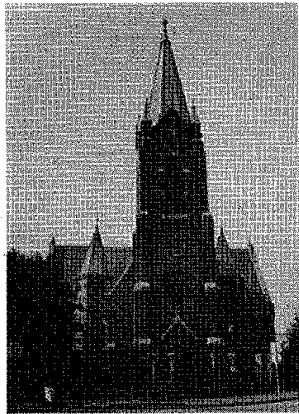


Kadarkút
1905-06
Dunántúl, Somogy

Kadarkút

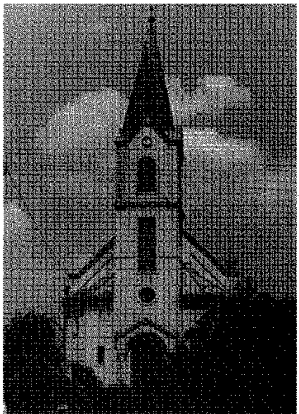
1905-1906





Kaposvár
1908
Dunántúl, Somogy

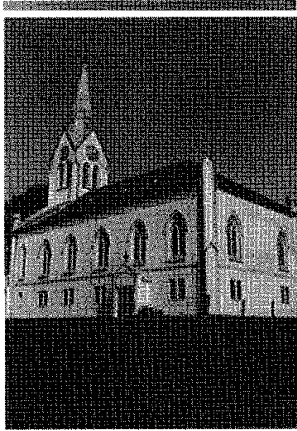
Kaposvár 1908



Kecskemét Mentelek
1929
Dunamellék, Bács-Kiskunság

Kecskemét Mentelek 1929

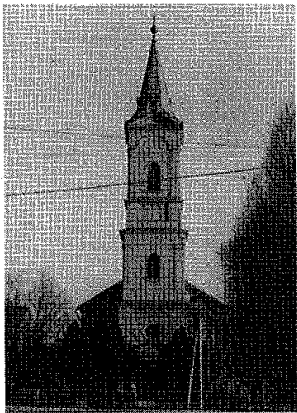
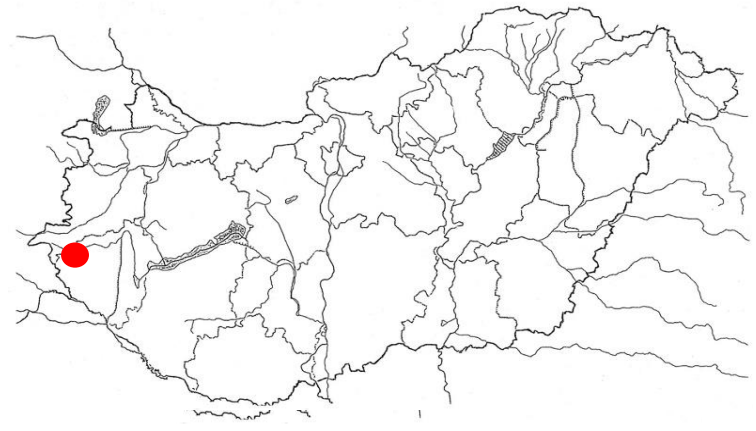




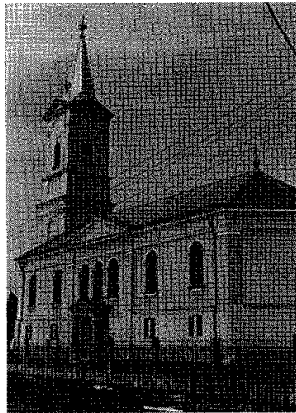
Kerkafalva
1912—13
Dunántúl, Vas-Zala

Kerkafalva

1912-13



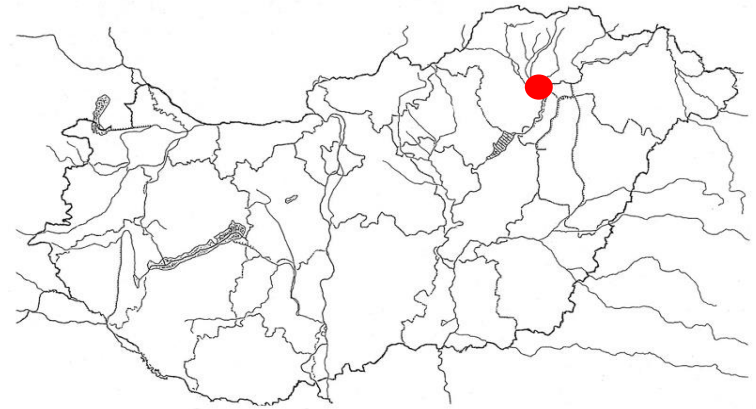
Kesznyéten (a)
1908
Tiszáninnen, Borsod

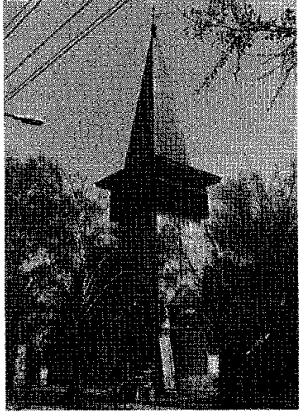


Kesznyéten (b)

Kesznyéten

1908

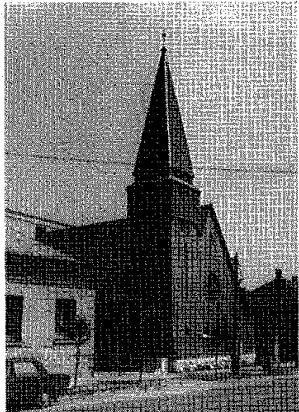
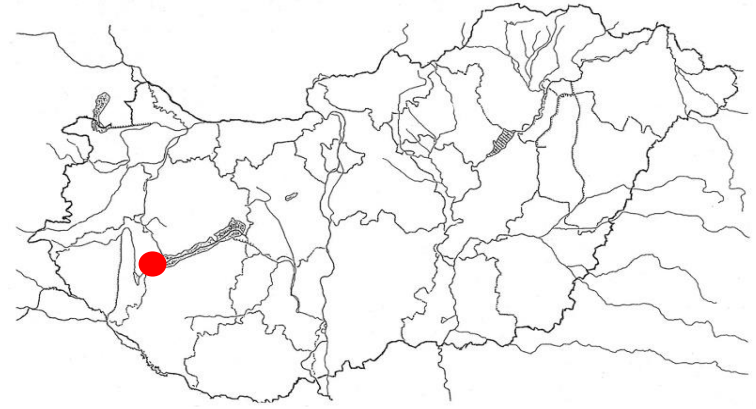




Keszthely
1931—32
Dunántúl, Veszprém

Keszthely

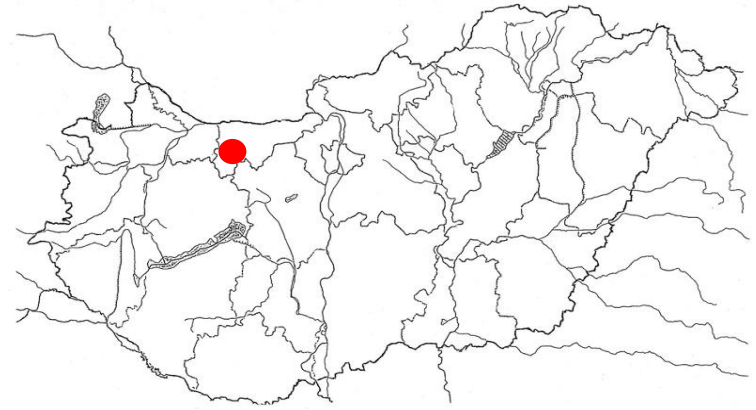
1931-32

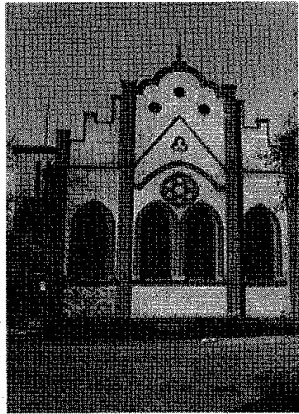


Kislér
1942
Dunántúl, Komárom

Kislér

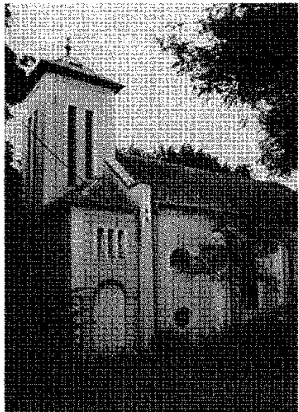
1942





Kiskunfélegyháza
1906—07
Dunamellék, Bács-Kiskunság

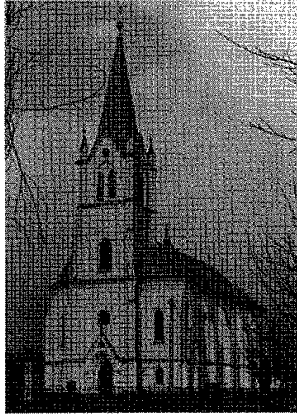
Kiskunfélegyháza 1906-1907



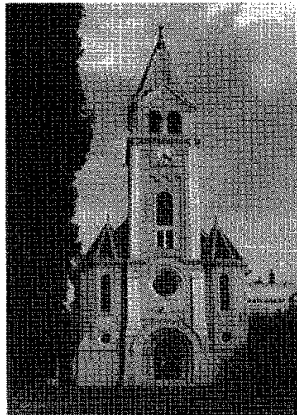
Kisláng
1931
Dunántúl, Mezőföld

Kisláng 1931



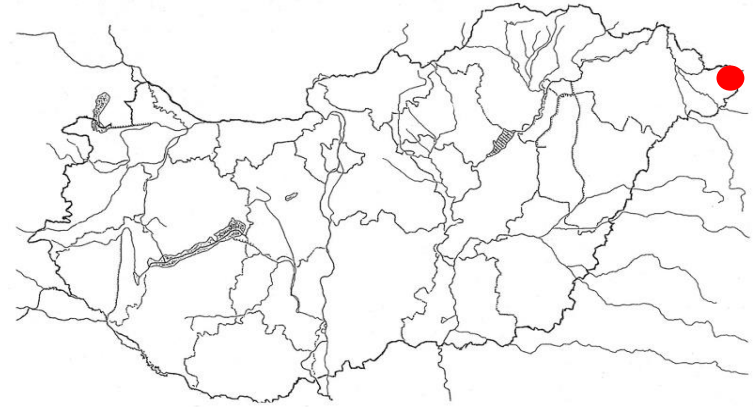


Kispalád
1910
Tiszántúl, Szatmár



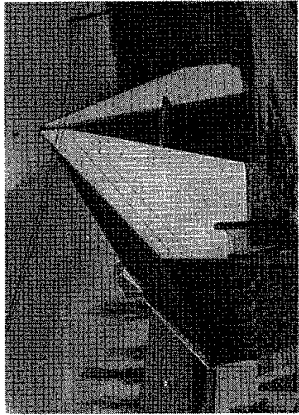
Komárom
1927
Dunántúl, Komárom

Kispalád 1907



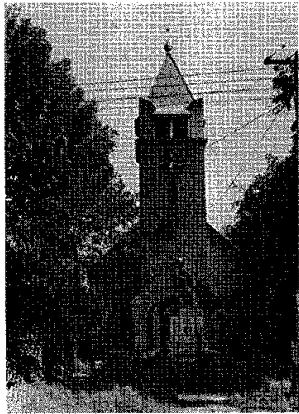
Komárom 1927





Komló
1978
Dunamellék, Baranya

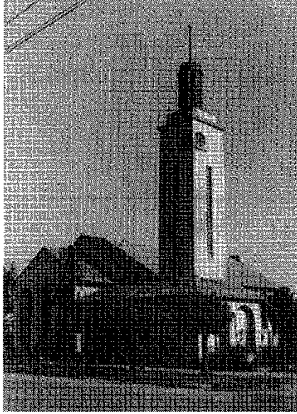
Komló 1978



Kuncsorba
1937
Tiszántúl, Nagykunság

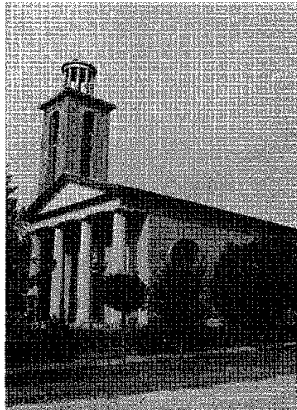
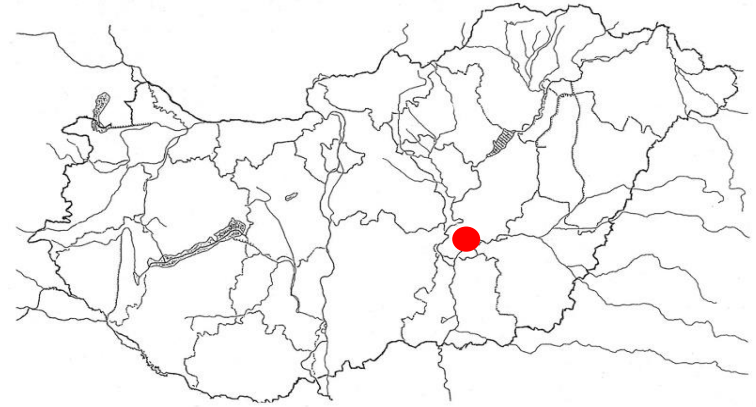
Kuncsorba 1937





Kunszentmárton
1937
Tiszántúl, Nagykovács

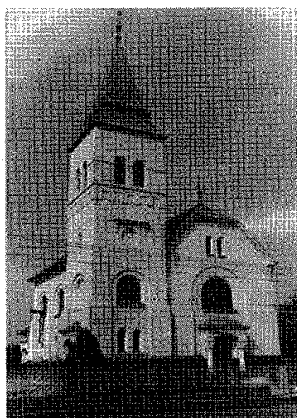
Kunszentmárton 1937



Kutas
1902
Dunántúl, Somogy

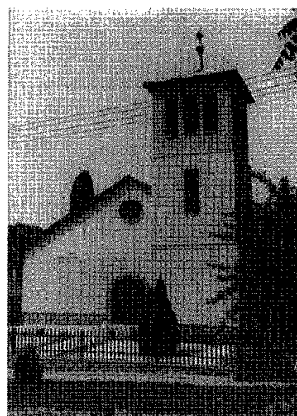
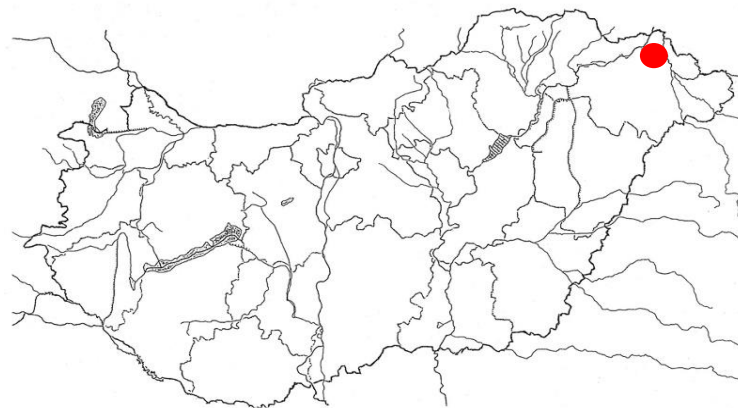
Kutas 1902





Lövőpetri
1907
Tiszántúl, Felsőszabolcs

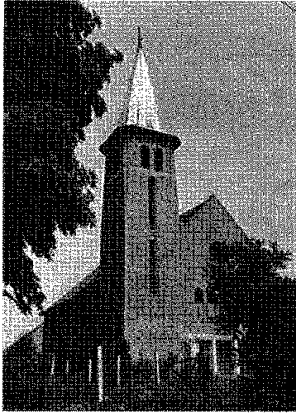
Lövőpetri 1907



Maglód
1978
Dunamellék, Délpest

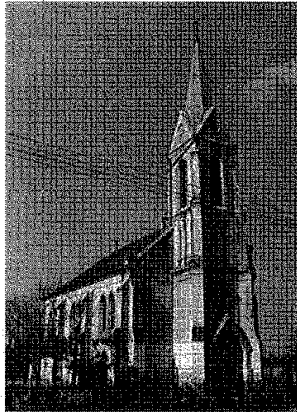
Maglód 1978





Magyarbóly
1942
Dunamellék, Baranya

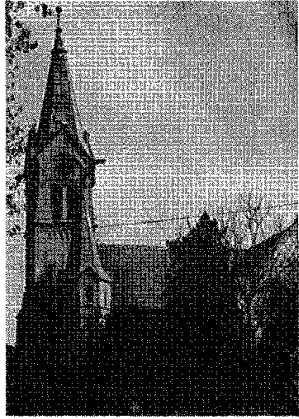
Magyarbóly 1942



Magyarcsanak
1913
Tiszántúl, Csongrád

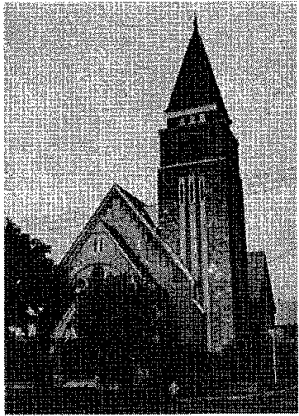
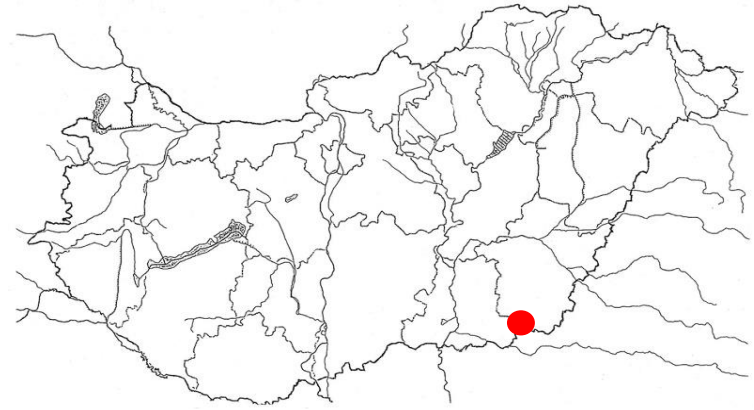
Magyarcsanak 1913



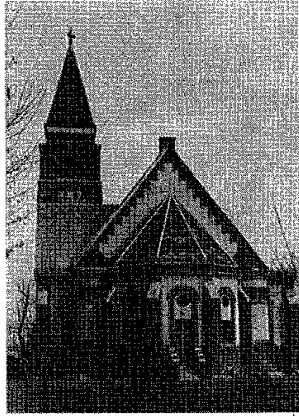


Mezőhegyes
1909
Tiszántúl, Békés

Mezőhegyes 1909

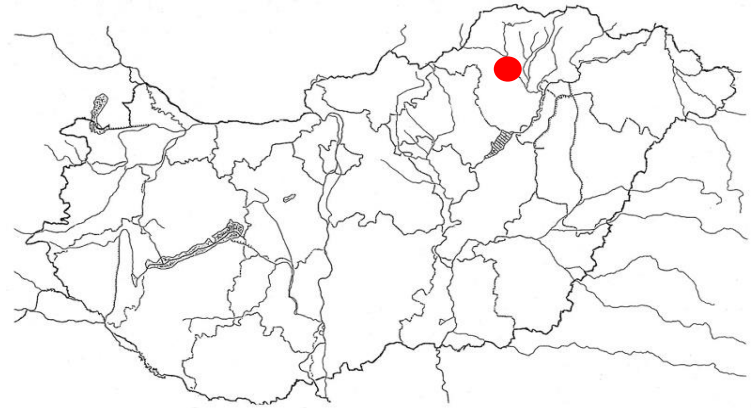


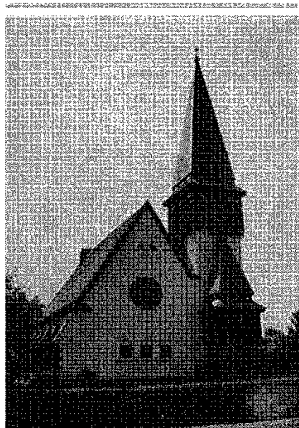
Miskolc Martin telep (a)
1929—30
Tiszáninnen, Borsod



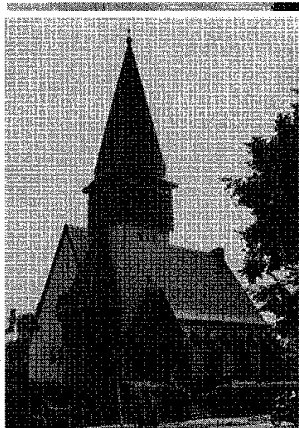
Miskolc Martin telep (b)

Miskolc Martintelep 1929-30



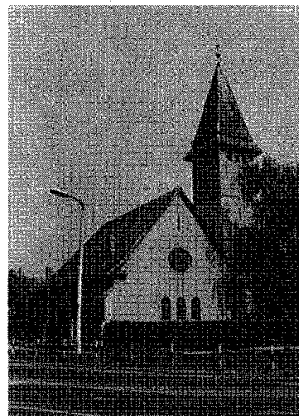
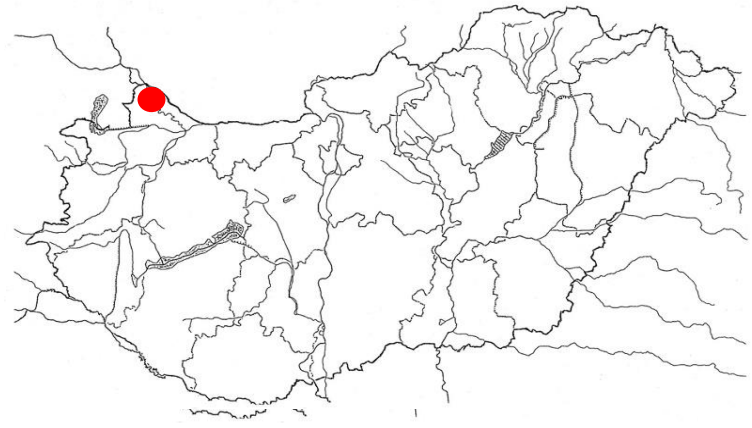


Mosonmagyaróvár (a)
1940
Dunántúl, Győr-Sopron-Pápa



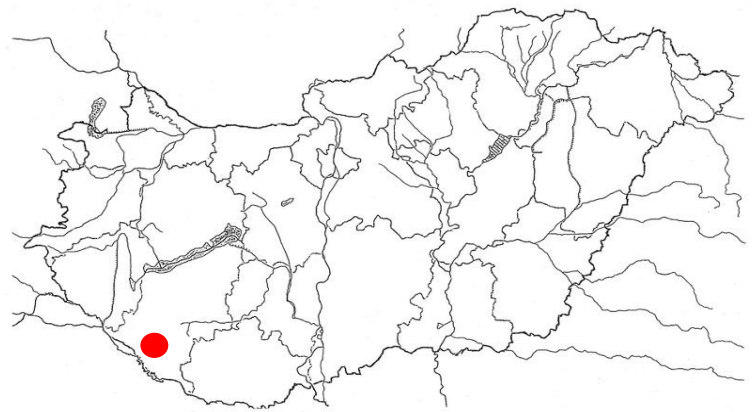
Mosonmagyaróvár (b)

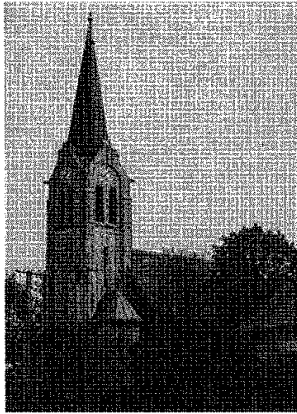
Mosonmagyaróvár 1940



Nagyatád
1939-40
Dunántúl, Somogy

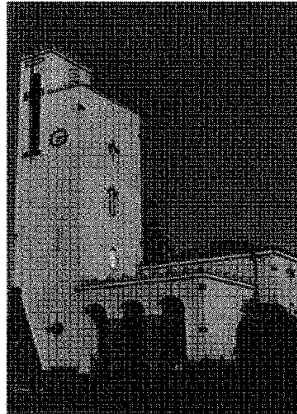
Nagyatád 1939-40





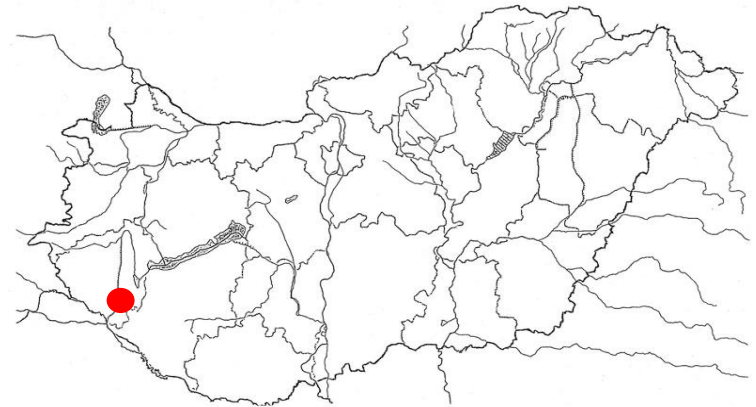
Nagyér (Nagymajláth)
1909
Tiszántúl, Csongrád

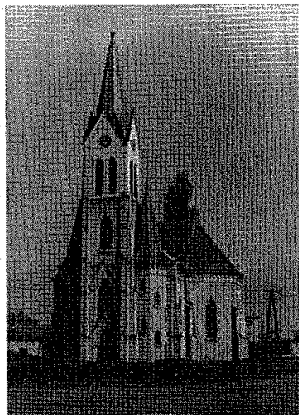
Nagyér (Nagymajláth) 1909



Nagykanizsa
1934
Dunántúl, Vas-Zala

Nagykanizsa 1934

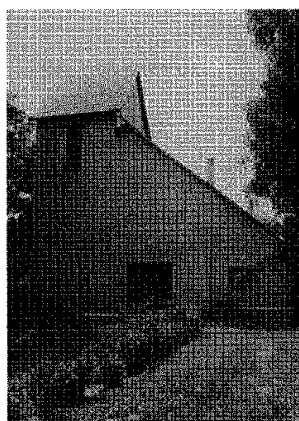




Orosháza
1914—16
Tiszántúl, Békés

Orosháza

1914-16

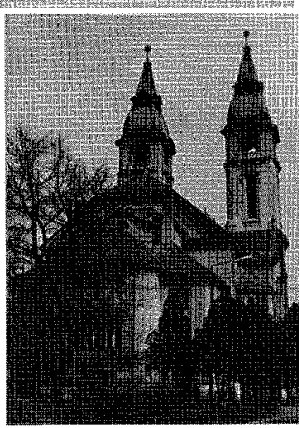


Örkény
1923—26
Dunamellék, Délpest

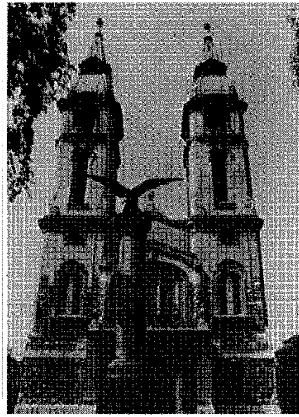
Örkény

1923-26





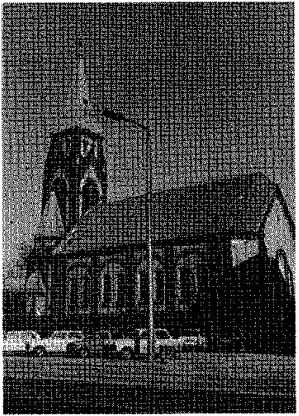
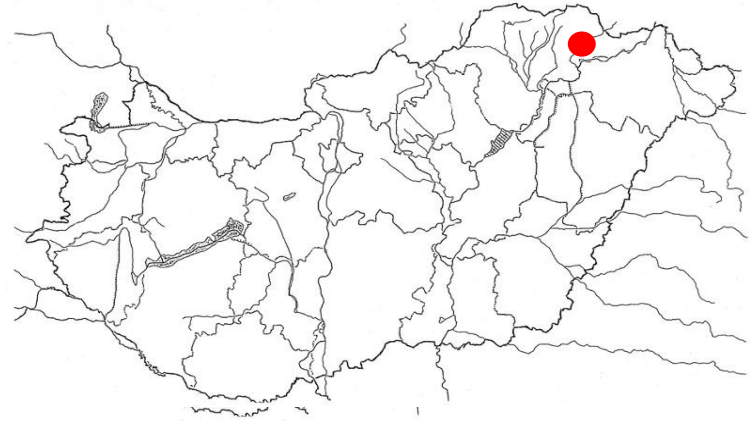
Pápa (a)
1939-41
Dunántúl, Győr-Sopron-Pápa



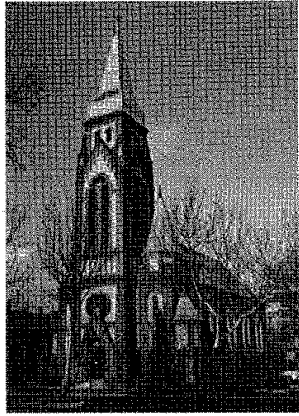
Pápa (b)

Pápa

1939-41



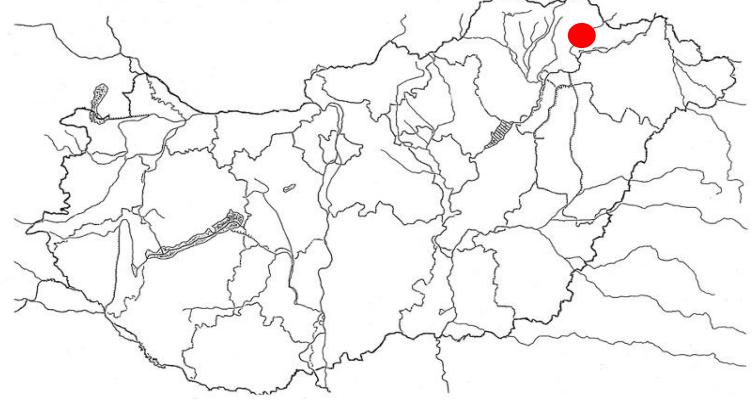
Pécs (a)
1907
Dunamellék, Baranya



Pécs (b)

Pécs

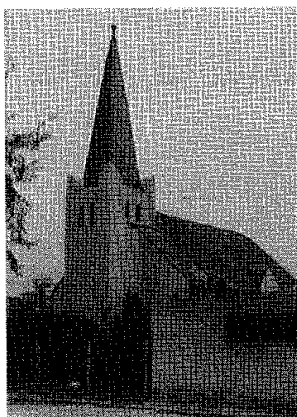
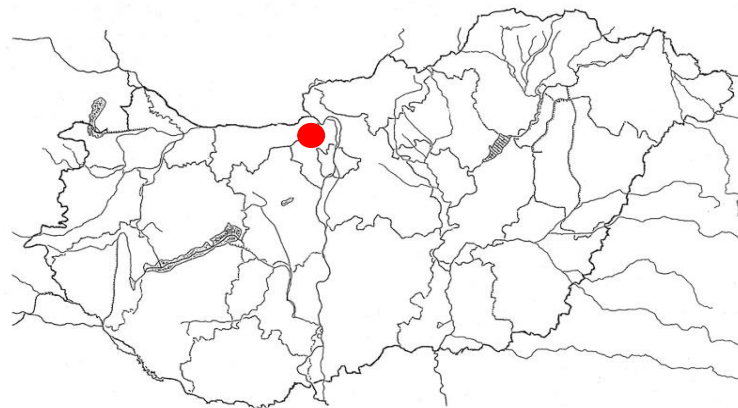
1907





Piliscsaba (Klotildliget)
1939
Dunamellék, Északpest

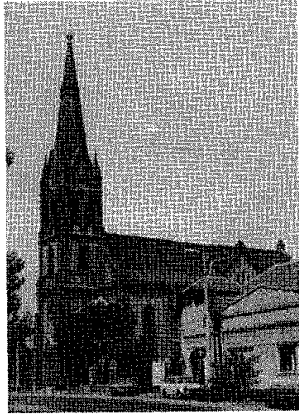
Piliscsaba (Klotildliget) 1939



Pusztaszabolcs
1935
Dunamellék, Vértesalja

Pusztaszabolcs 1935

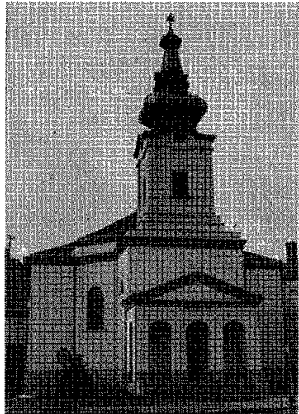




Ráckeve
1912-13
Dunamellék, Délpest

Ráckeve

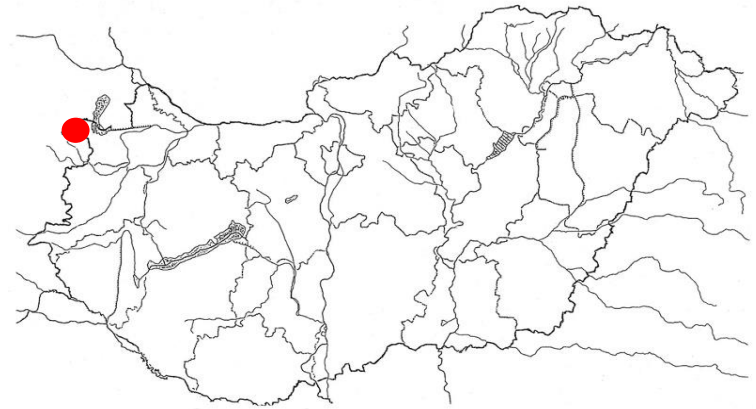
1912-13

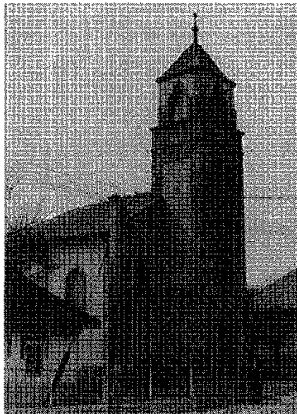


Sopron
1929
Dunántúl, Győr-Sopron-Pápa

Sopron

1929

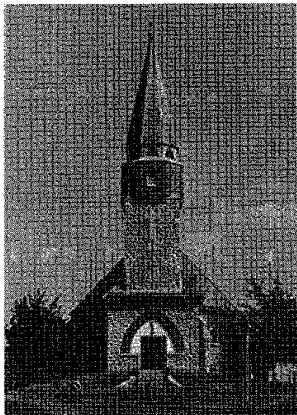
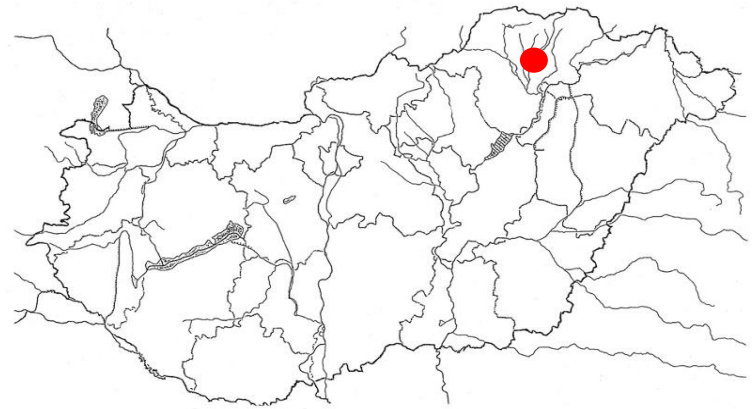




Sóstófalva
1938—39
Tiszáninnen, Zemplén

Sóstófalva

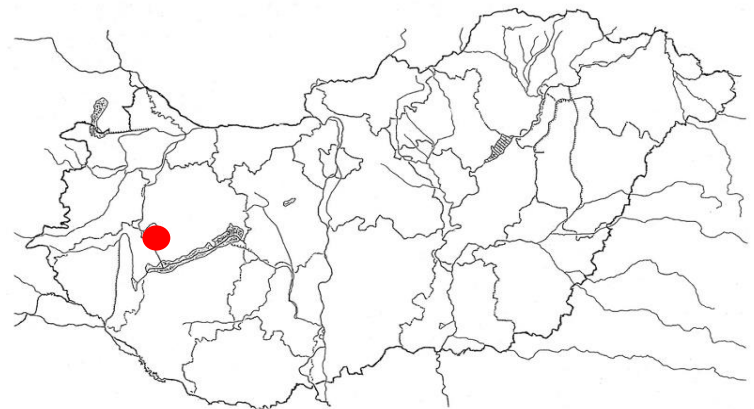
1938-39

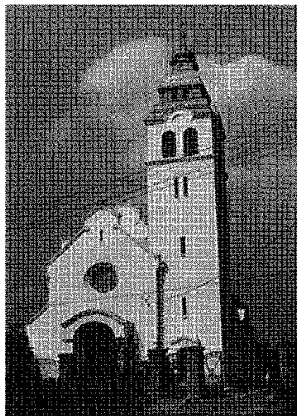


Sümeg
1936—37
Dunántúl, Veszprém

Sümeg

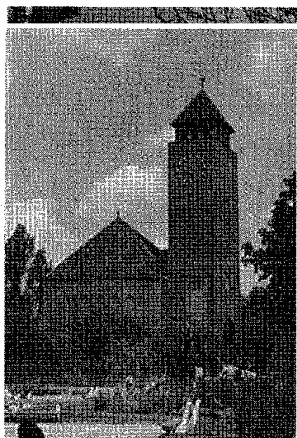
1936-37



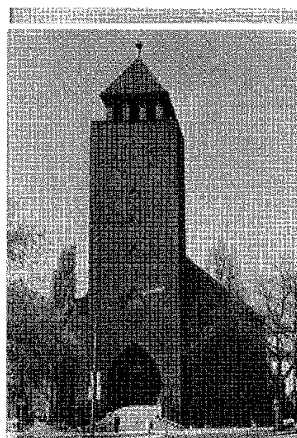


Szada
1928
Dunamellék, Északpest

Szada 1928



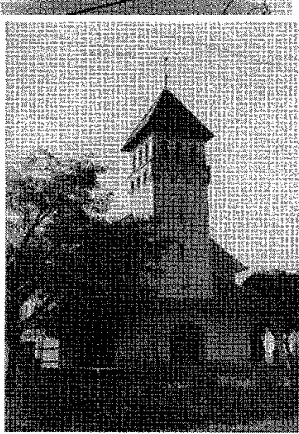
Szeged Honvéd tér (a)
1942-44
Tiszántúl, Csongrád



Szeged Honvéd tér (b)

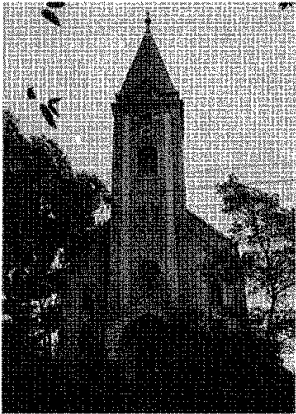
Szeged Honvéd tér 1942-44





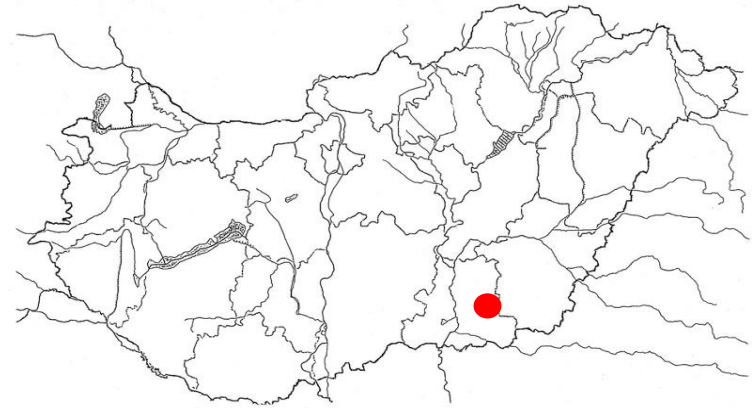
Szegvár
1938—47
Tiszántúl, Csongrád

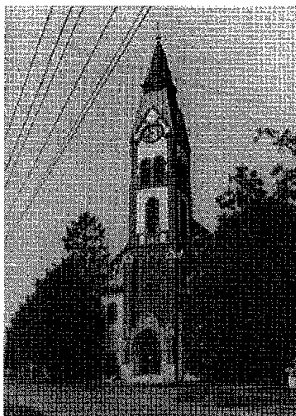
Szegvár 1938-47



Székkutas
1926
Tiszántúl, Csongrád

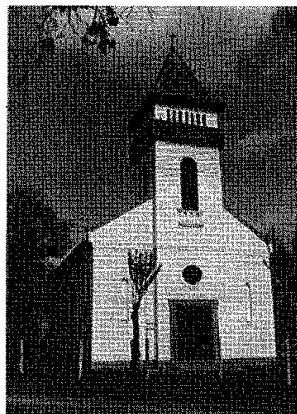
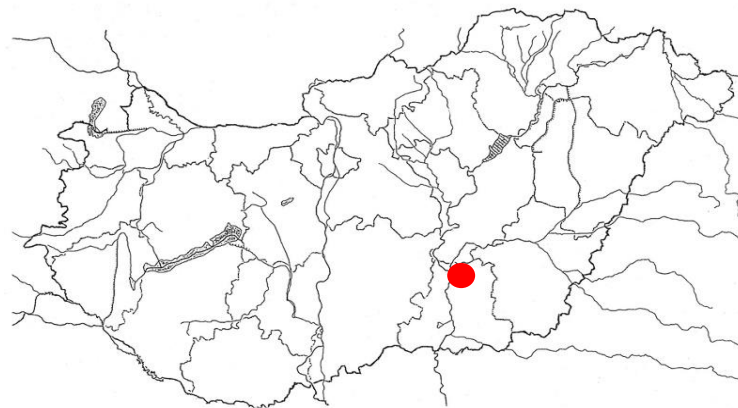
Székkutas 1926





Szentes Felsőpart
1914
Tiszántúl, Csongrád

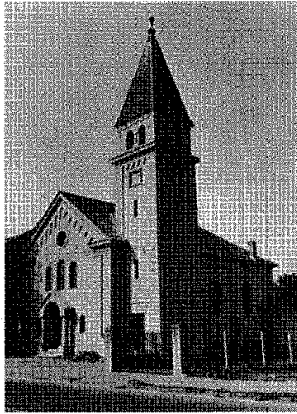
Szentes Felsőpart 1914



Szentlőrinc
1935
Dunamellék, Baranya

Szentlőrinc 1935

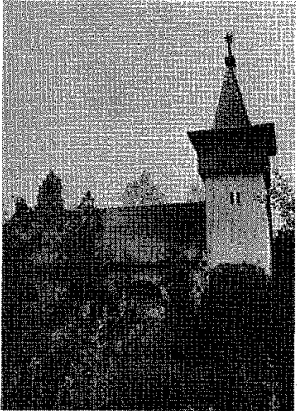




Szigetvár
1930–38
Dunamellék, Baranya

Szigetvár

1930-38



Sződliget (a)
1938
Dunamellék, Északpest

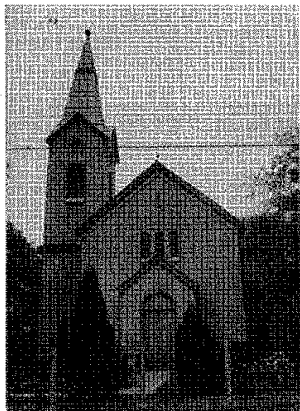


Sződliget (b)

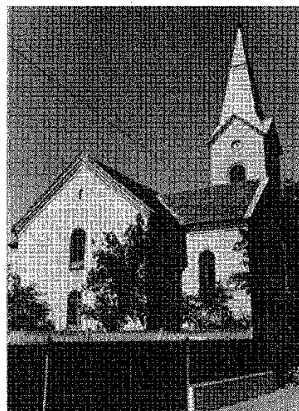
Sződliget

1938





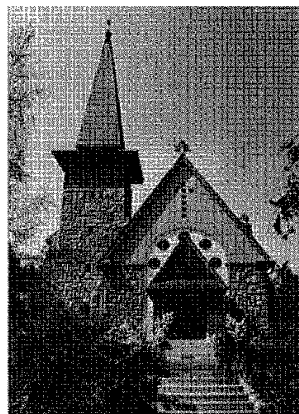
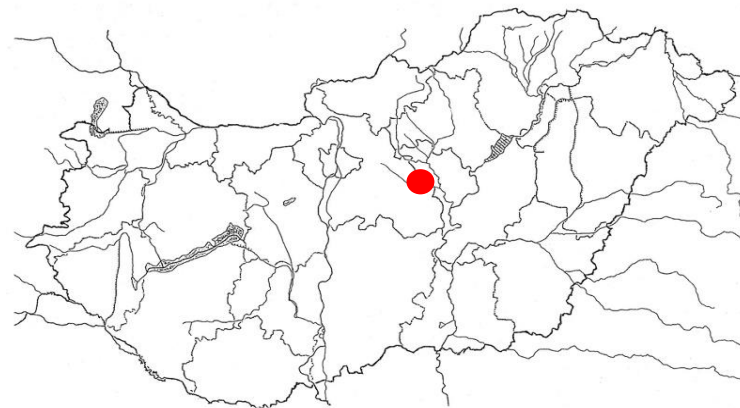
Tápiószele (a)
1900
Dunamellék, Délpest



Tápiószele (b)

Tápiószele

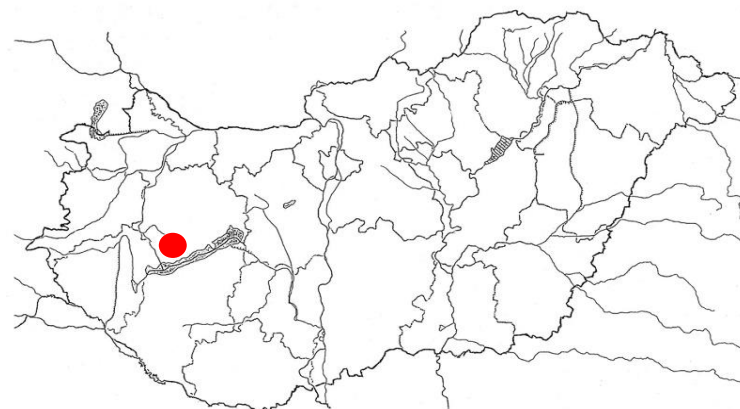
1900

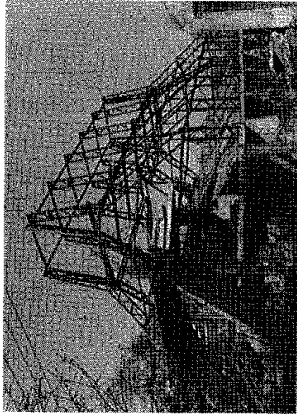


Tapolca
1935-36
Dunántúl, Veszprém

Tapolca

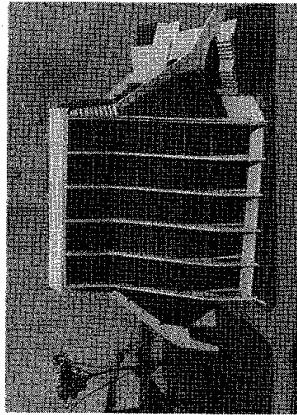
1935-36





Tatabánya (a)
1984–88 között épül
Dunántúl, Komárom

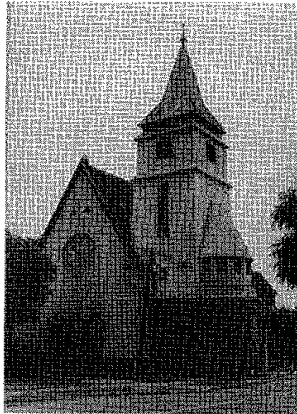
X



Tatabánya (b)
Az épülő templom makettje

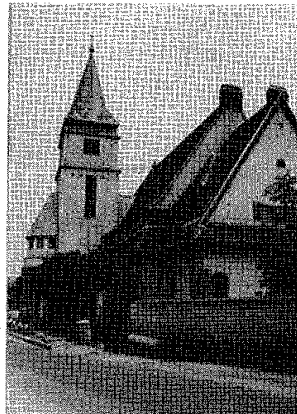
7

Tatabánya 1984-88



Tatabánya-Bánhida (a)
1939
Dunántúl, Komárom

K



Tatabánya-Bánhida (b)

7

Tatabánya-Bánhida 1939

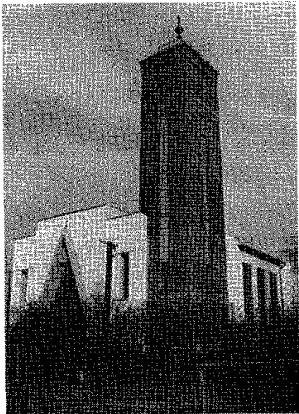
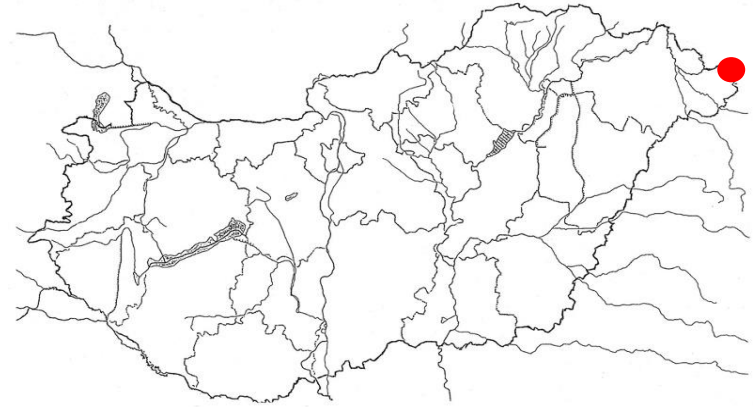




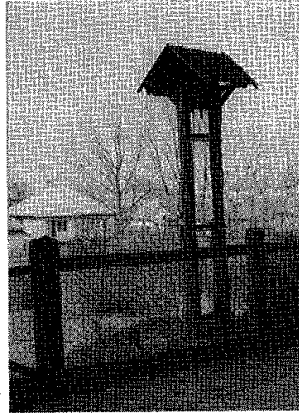
Tiszabecs
1907—10
Tiszántúl, Szatmár

Tiszabecs

1907-1910



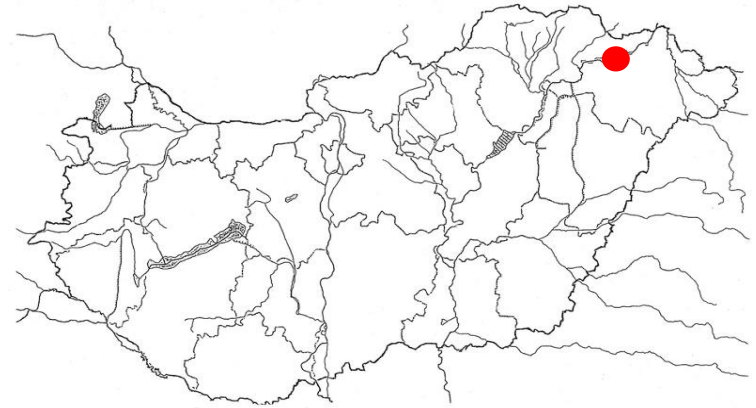
Tiszabercel (a)
1948—50
Tiszántúl, Nyírség

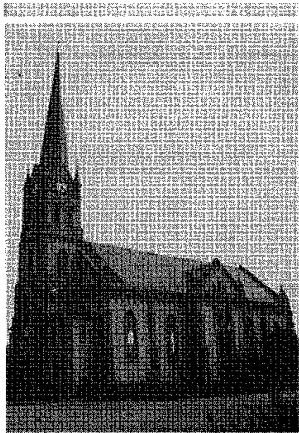


Tiszabercel (b)

Tiszabercel

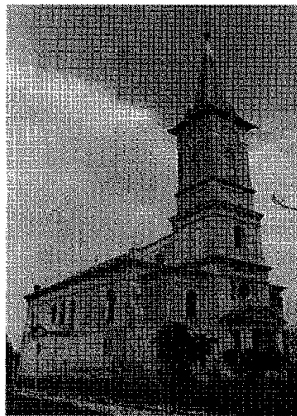
1948-50





Tiszakécske
1906—09
Dunamellék, Bács-Kiskunság

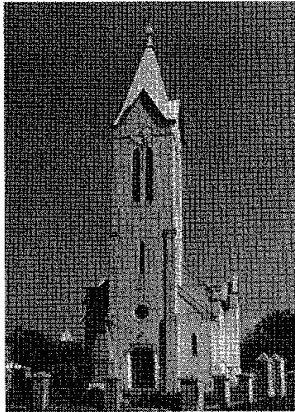
Tiszakécske 1906-1909



Tiszarád
1927
Tiszántúl, Nyírség

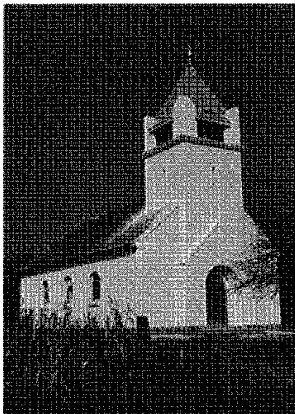
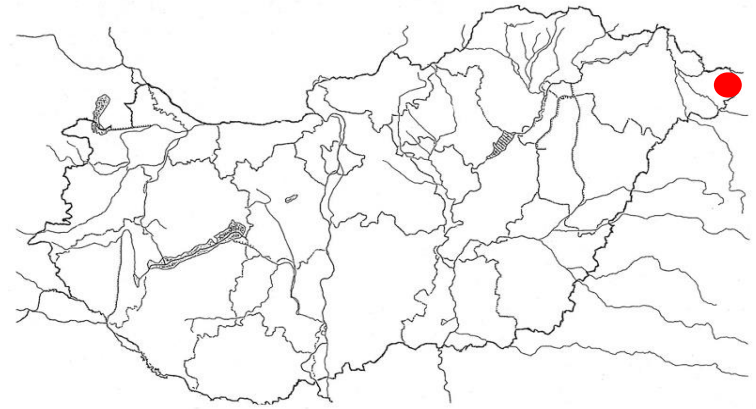
Tiszarád 1927





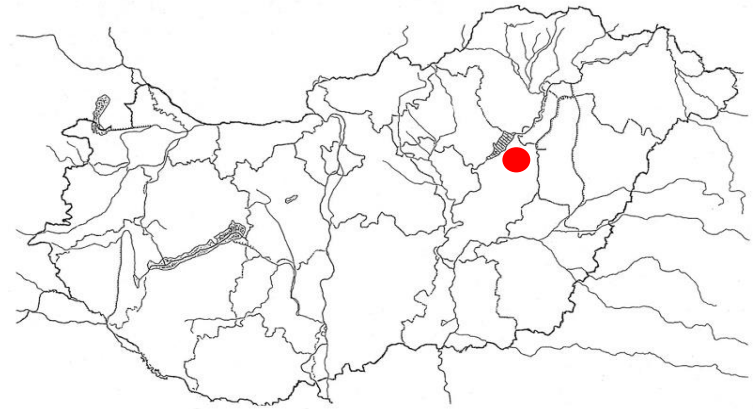
Tiszaberek
1932
Tiszántúl, Szatmár

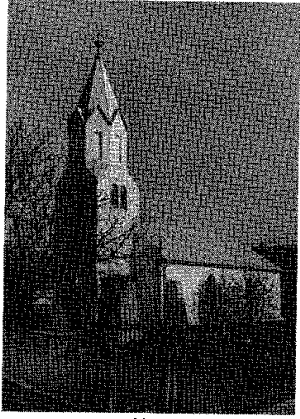
Tiszaberek 1932



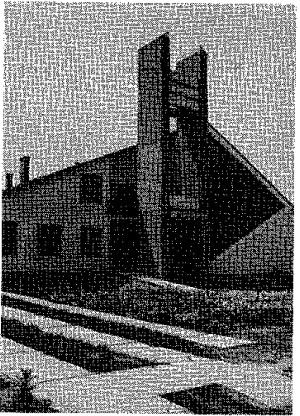
Tomajmonostora
1940
Tiszántúl, Nagykunság

Tomajmonostora 1940





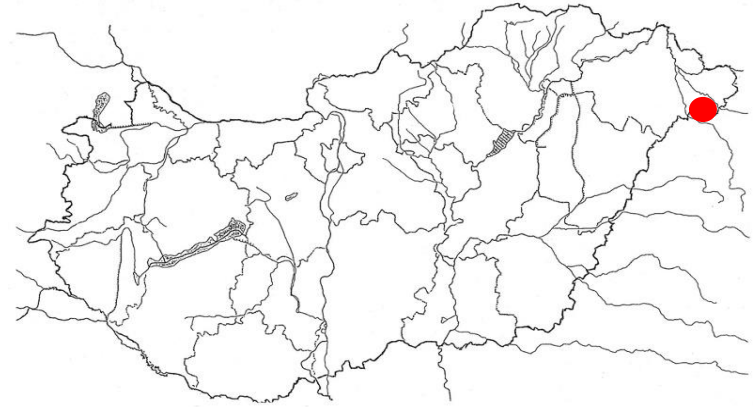
Ura
1928
Tiszántúl, Szatmár



Úröm
1981-85
Dunamellék, Északpest

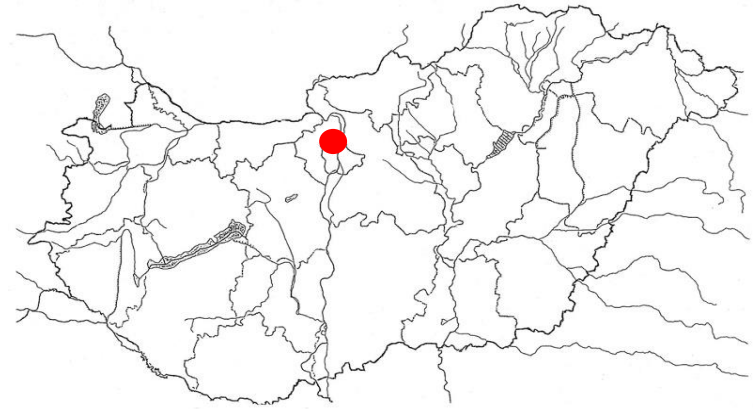
Ura

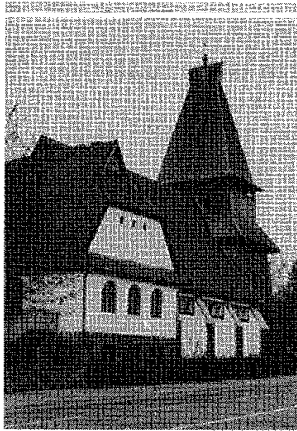
1928



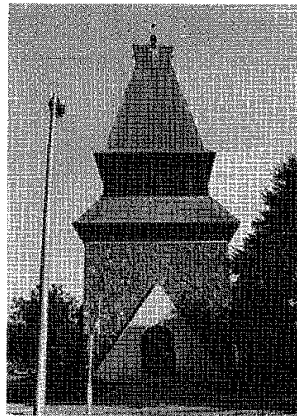
Úröm

1981-85





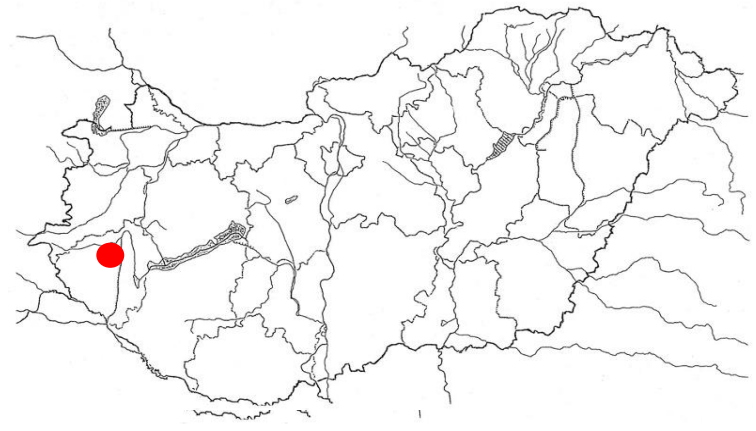
Zalaegerszeg (a)
1942
Dunántúl, Vas-Zala

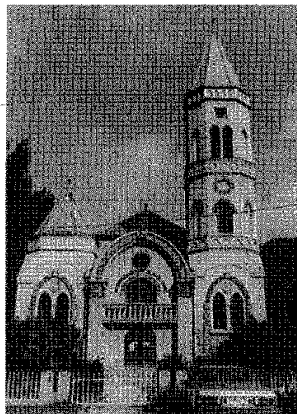


Zalaegerszeg (b)

Zalaegerszeg

1942



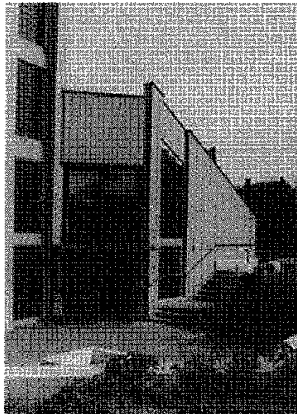


Bp. Budafok
1926—27
Dunamellék, Bp-Dél

Bp. Budafok

1926-27





Bp. Cimbalom u.
1982
Dunamellék, Bp-Észak

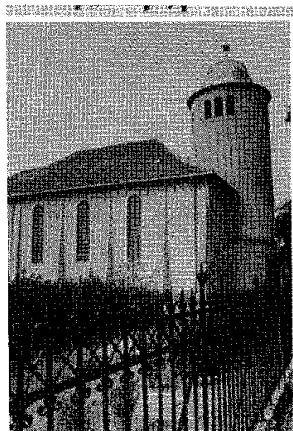
Bp. Cimbalom utca 1982



Bp. Csepel
1930—33
Dunamellék, Bp-Dél

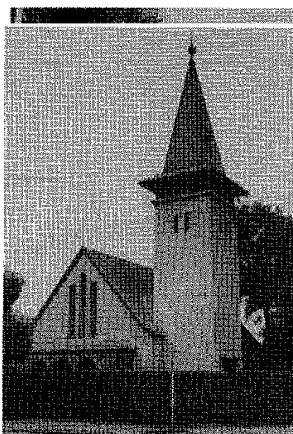
Bp. Csepel 1930-33





Bp. Frangepán u.
1933
Dunamellék, Bp-Észak

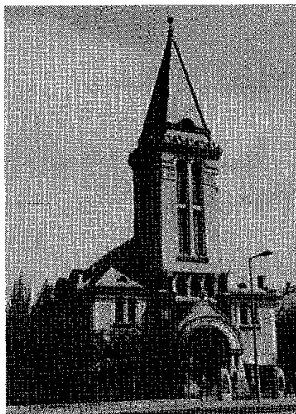
Bp. Frangepán utca 1933



Bp. Mátyásföld
1939
Dunamellék, Bp-Észak

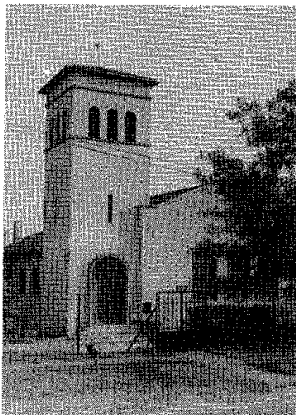
Bp. Mátyásföld 1939





Bp. Nagyváradtér
1930—35
Dunamellék, Bp-Dél

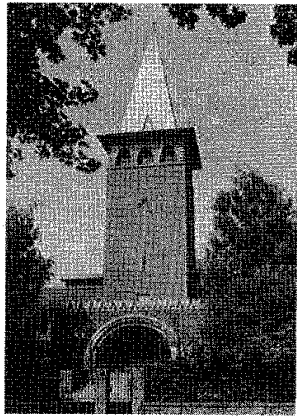
Bp. Nagyváradtér 1930-35



Bp. Pesthidegkút
1950
Dunamellék, Bp-Dél

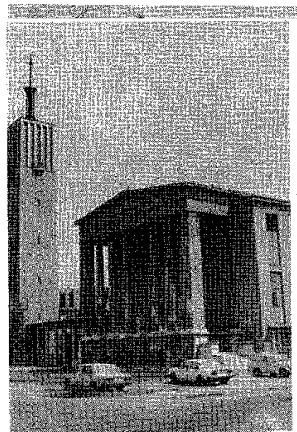
Bp. Pesthidegkút 1950





Bp. Pestlőrinc Kossuth tér
1932—41
Dunamellék, Bp-Dél

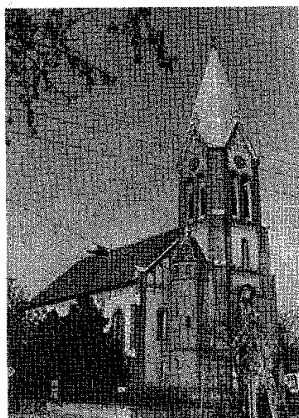
Bp. Pestlőrinc Kossuth
tér 1932-41



Bp. Pozsonyi út
1940
Dunamellék, Bp-Észak

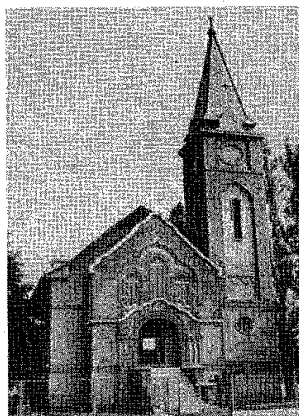
Bp. Pozsonyi út 1940





Bp. Rákoscaba
1904
Dunamellék, Bp-Észak

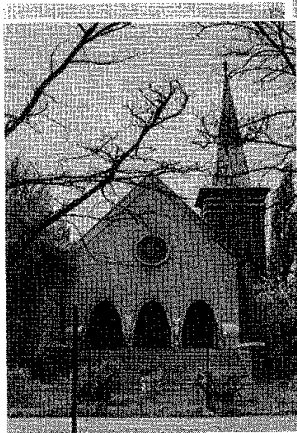
Bp. Rákoscaba 1904



Bp. Rákosfalva
1928
Dunamellék, Bp-Észak

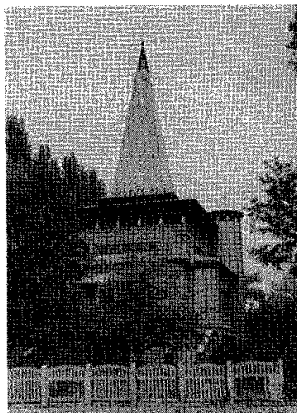
Bp. Rákosfalva 1928





Bp. Rákospalota Újváros
1936
Dunamellék, Bp-Észak

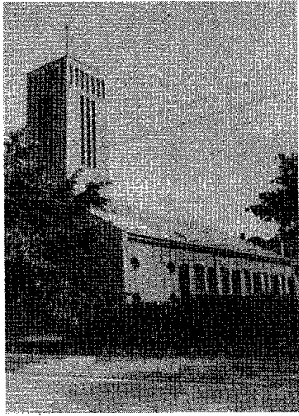
Bp. Rákospalota
Újváros 1936



Bp. Rákospalota MÁV telep
1944
Dunamellék, Bp-Észak

Bp. Rákospalota MÁV
telep 1944





Bp. Zugló
1898, 1912, 1940
Dunamellék, Bp-Észak

Bp. Zugló

1898 és 1912
és 1940

